



**LAKE JANE POOL**

— MEMBERS & GUESTS WELCOME —

**2021  
RESERVE STUDY  
LAKE JANE ESTATES**

Bonney Lake, WA 98391  
Financial Year 01.2021–12.2021  
Level 3 | Reserve Study Update  
09/14/20





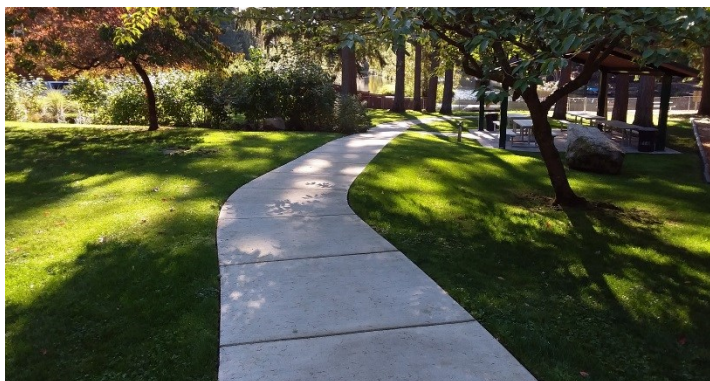
## A New Strategy for Reserve Funding.

Our reserve study approach is simple. We provide you with the insight needed to make fast, accurate and informed decisions. We focus on understanding your situation and providing funding solutions that are designed with your goals in mind. By focusing on the detail and the big picture we provide the information you need to best manage your reserve fund and annual contributions.

As a long-term capital budget plan, the reserve study identifies the current status of the reserve fund and whether contributions to the fund are adequate to address future needs. The report helps the Association make necessary decisions regarding the development of their reserve fund and establish expectations in relation to the timing and cost of significant repair and replacement projects.

The reserve study recommends funding through smaller monthly contributions rather than risking large, unanticipated special assessments. Regular and ongoing reserve contributions are favored over special assessment as they help distribute expenses equally between current and future owners, and establish a stable contribution rate.

The reserve study contains 'forward looking' concepts which reflect expectations with respect to certain future events and potential financial performance. Although we believe at this time that the expectations reflected within the reserve study are reasonable, no assurances can be given that such expectations will prove correct. We recommend that the reserve study be updated annually to address changing circumstances and conditions.



## 6 CONTRIBUTION RANGE

Funding programs and strategies that are available to the Association.



## 15 PERCENT FUNDED

How well funded is the Association's reserve fund.

### 4 EXECUTIVE SUMMARY

Summary of reserve study outcomes and property related data.

### 5 KEY INSIGHTS

Snapshot of key data points, highlighting the strength of current funding strategies.

### 8 BASELINE FUNDING SUMMARY

Summary of the Baseline funding strategy and projected outcomes.

### 9 CURRENT FUNDING SUMMARY

Summary of current funding strategies and projected outcomes.

### 10 METHODOLOGY

The what, when, where and how of the reserve study process.

### 15 FINANCIAL ANALYSIS

Percent funded and the strength of the reserve account.

### 17 RESERVE COMPONENT LIST

List of reserve components, anticipated cost, remaining, and useful life estimates.

### 18 RESERVE EXPENSES

Projected expenses over the coming 30 years.

### 21 FULL FUNDING PLAN

Recommended funding plan and cash flow projection.

**RESERVE STUDY GROUP** This work is copyright and has been supplied under contract to the Association and/or its representatives. Apart from the client's right to reproduce and distribute copies of the report as required by its governing documents or state law, no part of this work may be reproduced by any process without the written permission from Reserve Study Group, LLC. Requests and inquiries concerning reproduction and rights should be addressed to the Reserve Study Group, 701 Fifth Ave, Suite 4200, Seattle WA 98104. **PUBLISHED BY** Reserve Study Group, Seattle WASHINGTON.



## EXECUTIVE SUMMARY

### PROPERTY SUMMARY

ASSOCIATION NAME	Lake Jane Estates
LOCATION	Bonney Lake, WA 98391
YEAR CONSTRUCTED	1959
NUMBER OF UNITS	444
FINANCIAL YEAR	2021 (January 1, 2021 - December 31, 2021)
REPORT LEVEL	Level 3 Reserve Study Update

### RESERVE FUND

PROJECTED STARTING BALANCE <sup>1</sup>	\$47,817
FULL FUNDED BALANCE, IDEAL	\$188,165
CURRENT PER UNIT DEFICIENCY/(SURPLUS) IN RESERVES	\$316
PERCENT FUNDED <sup>2</sup>	25%
INTEREST EARNED	0.01%
INFLATION RATE <sup>3</sup>	3.00%

### RESERVE CONTRIBUTIONS

CURRENT RESERVE FUND CONTRIBUTION	\$25,000
FULL FUNDING, MAXIMUM CONTRIBUTION	\$35,373
BASELINE FUNDING, MINIMUM CONTRIBUTION	\$27,013
SPECIAL ASSESSMENT	\$0

<sup>1</sup> Information in relation to the Association's finances were supplied by the Association's representative and is not audited.

<sup>2</sup> The ratio, at a particular point of time (the beginning of the Fiscal Year), of the actual (or projected) Reserve Balance to the Fully Funded Balance, expressed as a percentage ([www.caionline.org](http://www.caionline.org)). Used to highlight the strength of the Association's reserve fund.

<sup>3</sup> Inflation rate is based upon the average annual increase of the Consumer Price Index (CPI) over the last 30-years, as published by the US Bureau of Labor Statistics ([www.labor.gov](http://www.labor.gov)).



## KEY INSIGHTS

**\$47,817**

RESERVE ACCOUNT  
BALANCE

**\$25,000**

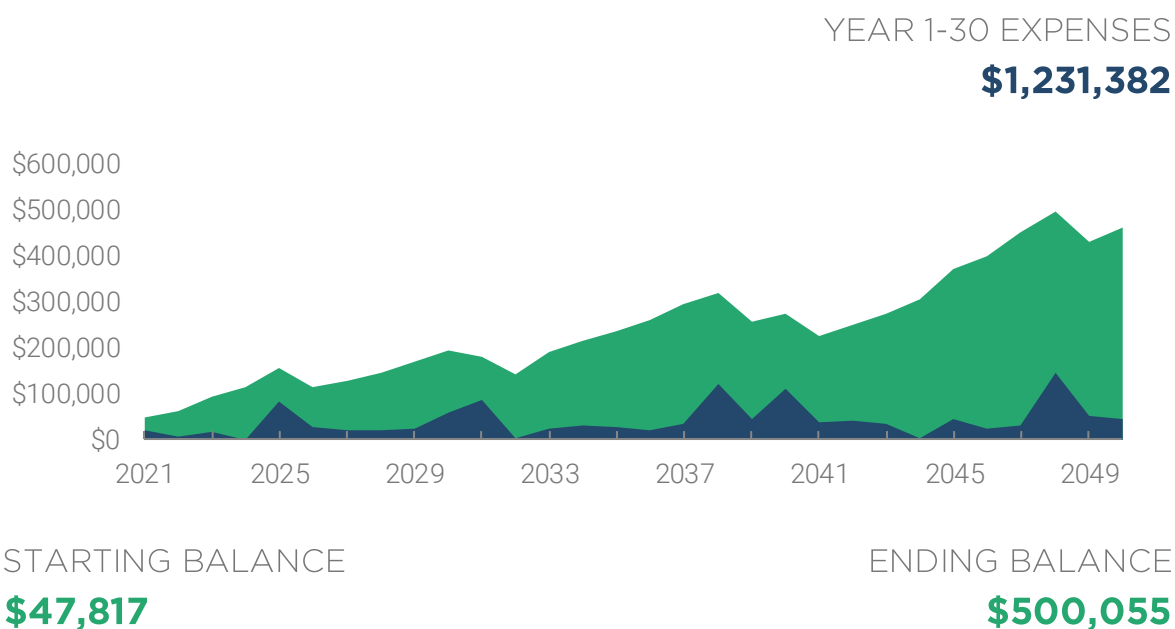
ANNUAL RESERVE  
CONTRIBUTION

**\$1,231,382**

PROJECTED EXPENSES  
OVER 30 YEARS

## FULL FUNDING STRATEGY

Annual member contributions to the reserve fund are used to address those expenses too large or infrequent to be addressed through annual operating funds. The chart below highlights the outcome of the Full Funding strategy over the mid-to-long term.



Note: Figures based upon the expectation that the Association will continue to increase member contributions by an inflationary rate of 3.00% annually. Year-over-year change the result of projected expenses on the Association's reserve account.



## CONTRIBUTION RANGE

We recommend that reserve contributions be evenly distributed between members over the life of a community. To achieve this goal, we establish an ideal contribution range within which the Association should establish ongoing payments.

**\$27,013**

MINIMUM

BASELINE FUNDING

**\$35,373**

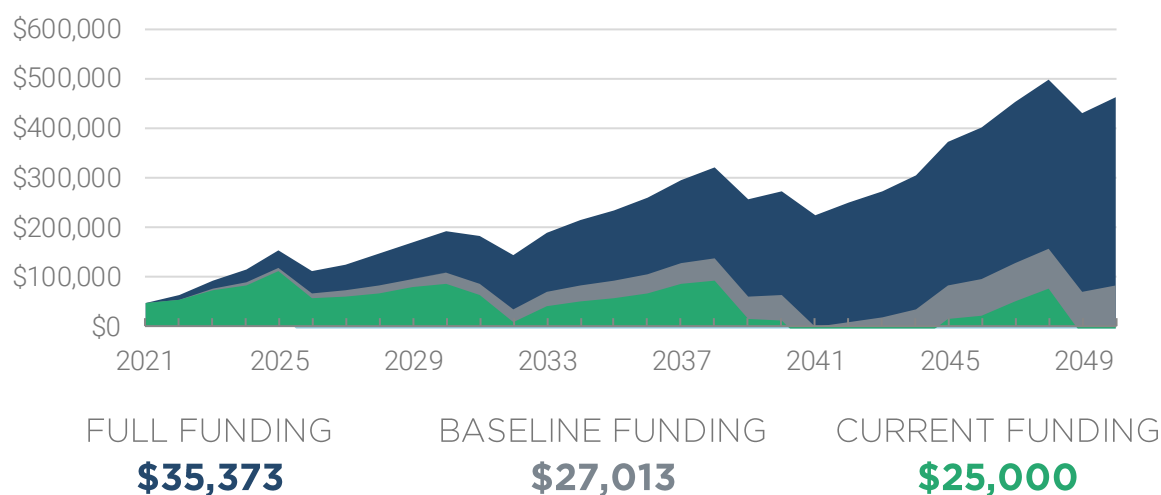
MAXIMUM

FULL FUNDING

**\$25,000**  
CURRENT FUNDING

## FUNDING STRATEGIES

The funding strategy chosen will have a direct impact on the growth of the Association's reserve fund. The chart below highlights the outcomes of the various funding strategies.



Note: Figures based upon the expectation that the Association will continue to increase the contributions highlighted by an inflationary rate of 3.00% annually.





## FULL FUNDING PLAN | SUMMARY

Year	Fully Funded Balance	Percentage Funded	Beginning Balance	Reserve Contribution	Special Assessment	Interest Earned	Reserve Expenditures	Ending Balance
2021	\$188,165	25%	\$47,817	\$35,373	\$0	\$6	\$19,800	\$63,395
2022	\$200,327	32%	\$63,395	\$36,434	\$0	\$8	\$5,845	\$93,992
2023	\$228,035	41%	\$93,992	\$37,527	\$0	\$10	\$15,807	\$115,722
2024	\$247,144	47%	\$115,722	\$38,653	\$0	\$14	\$0	\$154,388
2025	\$283,965	54%	\$154,388	\$39,812	\$0	\$13	\$81,614	\$112,599
2026	\$238,710	47%	\$112,599	\$41,007	\$0	\$12	\$27,011	\$126,607
2027	\$249,248	51%	\$126,607	\$42,237	\$0	\$14	\$21,582	\$147,275
2028	\$266,629	55%	\$147,275	\$43,504	\$0	\$16	\$19,186	\$171,609
2029	\$287,963	60%	\$171,609	\$44,809	\$0	\$18	\$23,119	\$193,318
2030	\$306,881	63%	\$193,318	\$46,153	\$0	\$19	\$58,186	\$181,303
2031	\$291,268	62%	\$181,303	\$47,538	\$0	\$16	\$85,809	\$143,048
2032	\$247,789	58%	\$143,048	\$48,964	\$0	\$17	\$2,838	\$189,191
2033	\$289,552	65%	\$189,191	\$50,433	\$0	\$20	\$25,272	\$214,373
2034	\$310,578	69%	\$214,373	\$51,946	\$0	\$22	\$31,977	\$234,364
2035	\$326,478	72%	\$234,364	\$53,504	\$0	\$25	\$26,452	\$261,441
2036	\$349,732	75%	\$261,441	\$55,110	\$0	\$28	\$20,499	\$296,079
2037	\$381,037	78%	\$296,079	\$56,763	\$0	\$31	\$32,616	\$320,257
2038	\$402,059	80%	\$320,257	\$58,466	\$0	\$29	\$120,683	\$258,069
2039	\$334,298	77%	\$258,069	\$60,220	\$0	\$27	\$45,242	\$273,073
2040	\$343,542	79%	\$273,073	\$62,026	\$0	\$25	\$110,296	\$224,829
2041	\$287,433	78%	\$224,829	\$63,887	\$0	\$24	\$39,464	\$249,276
2042	\$304,013	82%	\$249,276	\$65,804	\$0	\$26	\$41,578	\$273,528
2043	\$320,372	85%	\$273,528	\$67,778	\$0	\$29	\$35,496	\$305,839
2044	\$344,987	89%	\$305,839	\$69,811	\$0	\$34	\$4,046	\$371,638
2045	\$404,281	92%	\$371,638	\$71,905	\$0	\$39	\$43,122	\$400,460
2046	\$426,699	94%	\$400,460	\$74,063	\$0	\$43	\$22,665	\$451,901
2047	\$472,501	96%	\$451,901	\$76,284	\$0	\$48	\$29,923	\$498,310
2048	\$513,892	97%	\$498,310	\$78,573	\$0	\$46	\$146,550	\$430,380
2049	\$438,141	98%	\$430,380	\$80,930	\$0	\$45	\$50,048	\$461,306
2050	\$461,306	100%	\$461,306	\$83,358	\$0	\$48	\$44,657	\$500,055



## BASELINE FUNDING PLAN | SUMMARY

Year	Fully Funded Balance	Percentage Funded	Beginning Balance	Reserve Contribution	Special Assessment	Interest Earned	Reserve Expenditures	Ending Balance
2021	\$188,165	25%	\$47,817	\$27,013	\$0	\$5	\$19,800	\$55,035
2022	\$200,327	27%	\$55,035	\$27,823	\$0	\$7	\$5,845	\$77,020
2023	\$228,035	34%	\$77,020	\$28,658	\$0	\$8	\$15,807	\$89,879
2024	\$247,144	36%	\$89,879	\$29,518	\$0	\$10	\$0	\$119,408
2025	\$283,965	42%	\$119,408	\$30,403	\$0	\$9	\$81,614	\$68,206
2026	\$238,710	29%	\$68,206	\$31,316	\$0	\$7	\$27,011	\$72,518
2027	\$249,248	29%	\$72,518	\$32,255	\$0	\$8	\$21,582	\$83,198
2028	\$266,629	31%	\$83,198	\$33,223	\$0	\$9	\$19,186	\$97,244
2029	\$287,963	34%	\$97,244	\$34,219	\$0	\$10	\$23,119	\$108,355
2030	\$306,881	35%	\$108,355	\$35,246	\$0	\$10	\$58,186	\$85,424
2031	\$291,268	29%	\$85,424	\$36,303	\$0	\$6	\$85,809	\$35,924
2032	\$247,789	14%	\$35,924	\$37,392	\$0	\$5	\$2,838	\$70,484
2033	\$289,552	24%	\$70,484	\$38,514	\$0	\$8	\$25,272	\$83,735
2034	\$310,578	27%	\$83,735	\$39,670	\$0	\$9	\$31,977	\$91,436
2035	\$326,478	28%	\$91,436	\$40,860	\$0	\$10	\$26,452	\$105,853
2036	\$349,732	30%	\$105,853	\$42,085	\$0	\$12	\$20,499	\$127,451
2037	\$381,037	33%	\$127,451	\$43,348	\$0	\$13	\$32,616	\$138,197
2038	\$402,059	34%	\$138,197	\$44,649	\$0	\$10	\$120,683	\$62,173
2039	\$334,298	19%	\$62,173	\$45,988	\$0	\$6	\$45,242	\$62,925
2040	\$343,542	18%	\$62,925	\$47,368	\$0	\$3	\$110,296	\$0
2041	\$287,433	0%	\$0	\$48,789	\$0	\$0	\$39,464	\$9,326
2042	\$304,013	3%	\$9,326	\$50,252	\$0	\$1	\$41,578	\$18,002
2043	\$320,372	6%	\$18,002	\$51,760	\$0	\$3	\$35,496	\$34,268
2044	\$344,987	10%	\$34,268	\$53,313	\$0	\$6	\$4,046	\$83,541
2045	\$404,281	21%	\$83,541	\$54,912	\$0	\$9	\$43,122	\$95,340
2046	\$426,699	22%	\$95,340	\$56,559	\$0	\$11	\$22,665	\$129,245
2047	\$472,501	27%	\$129,245	\$58,256	\$0	\$14	\$29,923	\$157,593
2048	\$513,892	31%	\$157,593	\$60,004	\$0	\$11	\$146,550	\$71,059
2049	\$438,141	16%	\$71,059	\$61,804	\$0	\$8	\$50,048	\$82,822
2050	\$461,306	18%	\$82,822	\$63,658	\$0	\$9	\$44,657	\$101,833





## CURRENT FUNDING PLAN | SUMMARY

Year	Fully Funded Balance	Percentage Funded	Beginning Balance	Reserve Contribution	Special Assessment	Interest Earned	Reserve Expenditures	Ending Balance
2021	\$188,165	25%	\$47,817	\$25,000	\$0	\$5	\$19,800	\$53,022
2022	\$200,327	26%	\$53,022	\$25,750	\$0	\$6	\$5,845	\$72,933
2023	\$228,035	32%	\$72,933	\$26,523	\$0	\$8	\$15,807	\$83,656
2024	\$247,144	34%	\$83,656	\$27,318	\$0	\$10	\$0	\$110,984
2025	\$283,965	39%	\$110,984	\$28,138	\$0	\$8	\$81,614	\$57,516
2026	\$238,710	24%	\$57,516	\$28,982	\$0	\$6	\$27,011	\$59,493
2027	\$249,248	24%	\$59,493	\$29,851	\$0	\$6	\$21,582	\$67,768
2028	\$266,629	25%	\$67,768	\$30,747	\$0	\$7	\$19,186	\$79,336
2029	\$287,963	28%	\$79,336	\$31,669	\$0	\$8	\$23,119	\$87,895
2030	\$306,881	29%	\$87,895	\$32,619	\$0	\$8	\$58,186	\$62,335
2031	\$291,268	21%	\$62,335	\$33,598	\$0	\$4	\$85,809	\$10,128
2032	\$247,789	4%	\$10,128	\$34,606	\$0	\$3	\$2,838	\$41,899
2033	\$289,552	14%	\$41,899	\$35,644	\$0	\$5	\$25,272	\$52,276
2034	\$310,578	17%	\$52,276	\$36,713	\$0	\$5	\$31,977	\$57,017
2035	\$326,478	17%	\$57,017	\$37,815	\$0	\$6	\$26,452	\$68,386
2036	\$349,732	20%	\$68,386	\$38,949	\$0	\$8	\$20,499	\$86,844
2037	\$381,037	23%	\$86,844	\$40,118	\$0	\$9	\$32,616	\$94,355
2038	\$402,059	23%	\$94,355	\$41,321	\$0	\$5	\$120,683	\$14,999
2039	\$334,298	4%	\$14,999	\$42,561	\$0	\$1	\$45,242	\$12,319
2040	\$343,542	4%	\$12,319	\$43,838	\$0	\$0	\$110,296	-\$54,139
2041	\$287,433	0%	-\$54,139	\$45,153	\$0	\$0	\$39,464	-\$48,450
2042	\$304,013	0%	-\$48,450	\$46,507	\$0	\$0	\$41,578	-\$43,520
2043	\$320,372	0%	-\$43,520	\$47,903	\$0	\$0	\$35,496	-\$31,113
2044	\$344,987	0%	-\$31,113	\$49,340	\$0	\$0	\$4,046	\$14,181
2045	\$404,281	4%	\$14,181	\$50,820	\$0	\$2	\$43,122	\$21,880
2046	\$426,699	5%	\$21,880	\$52,344	\$0	\$4	\$22,665	\$51,563
2047	\$472,501	11%	\$51,563	\$53,915	\$0	\$6	\$29,923	\$75,562
2048	\$513,892	15%	\$75,562	\$55,532	\$0	\$3	\$146,550	-\$15,452
2049	\$438,141	0%	-\$15,452	\$57,198	\$0	\$0	\$50,048	-\$8,303
2050	\$461,306	0%	-\$8,303	\$58,914	\$0	\$0	\$44,657	\$5,955



## METHODOLOGY

---

An important aspect of living in a common area development such as a cooperative, condominium, or homeowner Association is the community's ownership and commitment to maintain its common areas.

---

Association members have a vested interest in maintaining and preserving their investment. To meet these obligations, the Association should prudently prepare for the future and contribute funds into a reserve account. Periodic contributions provide the freedom to gradually accumulate funds for anticipated expenditures while limiting the need to raise large sums of money through alternative means, such as special assessments.

When implementing a policy to fund major repair or replacement, the Board must educate owners about the benefits of accumulating reserve funds in advance through periodic contributions. Benefits of a systematic accumulation of funds include:

- having assurance that funds for major repairs and replacements will be available when needed;
- development of an equitable method of charging both current and future owners for ongoing use of assets;
- preservation of the market value of individual units; and
- compliance with the governing documents, statutes, mortgages, and other similar requirements.

A reserve study recommends the preferable mode of funding through smaller monthly contributions rather than facing large, unanticipated special assessments. The reserve study provides an Association with access to information and materials that will assist them in making timely and informed decisions about their reserve fund and contributions.

A reserve study is the sum of two parts: the physical and financial analysis. The physical analysis is a result of the on-site collection and review of data specific to the property's reserve components, common areas, and limited common areas. Through an onsite inspection and the use of source materials, the Reserve Specialist quantifies and establishes the reserve component inventory and assesses the physical condition of the Association's reserve components. Data from the physical analysis is used to define the scope and timing of future anticipated expenses.

The financial analysis evaluates the condition of the Association's reserve fund in relation to its income and anticipated expenses. It appraises the adequacy of the reserve fund, and associated



member contributions, against the current and future expenditures of the Association. To adequately forecast these expenditures over the 30-year projection period, current costs, projected inflation, and interest rates must be established. Recommendations are then provided to establish a reserve fund that addresses anticipated expenses, without having to resort to special assessments.

Due to the long-term nature of a reserve study, certain assumptions must be made. Every effort has been made to ensure that the recommendations are based upon reliable and experienced sources in the building industry. However, there can be no guarantee that events will occur at the predicted specific intervals, or that they will occur at all. Any reserve study must be viewed in the light of circumstances existing at the actual time of the study.

## PHYSICAL ANALYSIS

As part of this reserve study a comprehensive list of reserve components (major common and limited common elements) has been compiled. Estimates for the useful life, remaining life, plus current repair and replacement costs for each of these reserve components have been calculated. This list is not intended to be exhaustive. However, an inaccurate or incomplete list of components can have an adverse impact upon the Association's long-term funding plan.

### Site Inspection

A site inspection is conducted to assess the general condition of the property and its common areas. The on-site inspection is visual in nature, and no destructive or invasive testing is conducted. Observations are recorded using a representative sampling of the Association's common areas and reserve components. The component inventory and associated field measurements are also substantiated as part of the inspection.

### Reserve Components

Determination of what constitutes a reserve component is dependent on a number of factors. A four-part test is generally used to distinguish a reserve item from an operational or maintenance expense. A component is included as a reserve item only if it satisfies ALL criteria outlined below:

- It is part of the Association's common and limited common area responsibilities.
- It has a predictable useful service life.
- Its useful life fits within the projection period. This means that components with a life of 30 years or more may not be included as part of the report if it is determined that they will last beyond the projection period.
- Its cost for repair or replacement is too high to include as part of the operating budget.





The components of common property that an Association includes in its reserve funding plan are also dependent on the type of project, the construction properties and the Association's applicable governing documents and state statutes.

### **Component Useful Life**

The useful life of a reserve component relates to the number of years it is expected to last, given reasonable care and maintenance. The prediction of reserve and building component life can be no more than an informed estimate based upon information made available at the time of the report's development. Consideration is given to vendor recommendations, material warranty information provided at the time of the report's development, along with other published sources. The data and service life estimates in this report are based on information gathered from various groups and industry sources as outlined below:

- Historical data and feedback from the Association;
- Management groups and maintenance managers;
- Manufacturer recommendations and industry standards;
- Published sources of service life data;
- Manufacturers' and suppliers' data.

### **Component Remaining Useful Life**

The remaining life of a reserve component refers to the number of years left before an item's expected repair or replacement. A component's remaining life is contingent upon the following factors:

- Age/years in service;
- Physical condition;
- Frequency and quality of inspections and maintenance;
- General use;
- Environment, impact of weather and building location;
- Installation methods that meets or exceed industry standards;
- Design and quality of materials used.

In addition to deterioration or anticipated failure of a component, the longevity may be impacted by obsolescence. The accuracy of the estimate is contingent upon reliable information made available at the time of the report's development. It is important to note that even with the highest degree of diligence and experience, outcomes will vary, and no guarantee can be given as to the timing or service life of the reserve components. All service life assessments in this report are based on the assumption that installation is carried out in accordance with manufacturer's recommendations and installation instructions, together with industry standards of workmanship.



## FINANCIAL ANALYSIS

An Association, like any business entity, must prepare financially for the replacement and repair of its assets. Reserve study funding analysis is an important part of the annual budget process. Reserve funding should be reviewed at least once annually to help determine the annual assessment to be charged to members. The following elements are used in the financial analysis.

### Recommended Funding Rate

We advocate a program of regular reserve fund contributions and promote a gradual means of reserving for future repair and replacement expenses. Recommended contributions are set at a level where they require only minor annual increases. The rate is designed to distribute the anticipated cost of common property ownership equitably between all members over the entire projection period.

### Fully Funded Balance

The Fully Funded balance is equal to the total depreciable cost of all the Association's reserve components. It is determined by dividing each reserve component's cost by its useful life, and multiplying that by the number of years the component has been in service (effectively its age). In essence, the depreciated or 'used up' value of a component is utilized to establish an amount that the Association should have saved by a particular time. The recommendations in this report are based upon a Full Funding plan, which sets the goal of achieving one hundred percent fully funded reserves by the end of the 30-year projection period. We advocate full funding as we feel that this approach provides a solid platform to address future needs, thus dramatically reducing the need for special assessment.

### Percent Funded

An Association's reserve fund status is assessed by comparing the ratio of actual or projected funds available verses how much they 'should have saved'. The result is presented as a percentage and is commonly known as "percent funded". In other words, percent funded is calculated by dividing the Association's current reserve fund balance by the fully funded balance. This equation is an industry measure of how well prepared an Association is to meet its current and future repair and replacement obligations. Percent funded highlights the strength of the Association's reserve account in relation to the anticipated costs of repair and replacement.

### Reserve Component Cost

Current cost estimates for reserve components are derived from a variety of sources but typically are based on cost data sourced from national construction estimators (R.S. Means) and vendor pricing acquired from regional contractors and suppliers. All cost estimates formulated from national estimators are based upon the latest specific geographical information for the area. Future cost estimates are determined by applying the assumed annual inflation rate to the current cost of each component.



Individual cost estimates are for budgeting purposes only. Actual construction costs can vary significantly due to economies of scale, material availability, labor, seasonal considerations, and other factors beyond our control. We recommend that project costs be substantiated well in advance of the anticipated date of repair and replacement. A detailed evaluation by a qualified professional should also be undertaken to establish the scope and budget of each project.

Cost estimates do not account for permits, architectural, or project management fees that may be required. Allowances and contingencies must also be added to the total as the scope of work is defined.

### **Inflation Rate**

The effect of inflation on the cost of reserve components is a key factor in the financial projections. Historically, the cost of construction materials and labor rise at a higher rate than that experienced by the general economy. RSG has chosen to use an inflationary multiplier that is somewhat higher than the current general consumer index for inflation. The rate used is based upon the historical average of inflation over the last 30 years. This rate reflects a realistic appreciation of future costs for reserve components and assists the Association in adequately budgeting for increasing cost.

### **Interest Rate**

The interest rate used in this report is formulated on a conservative rate of return. Unless otherwise advised by the Association, an assumed net interest rate of 1.00% is used. RSG offers no guarantee or opinion in relation to investment decisions made by the Association or the rate of return achieved.

### **Current Reserve Fund Balance**

The analysis, recommendations, and financial projections made within this report are heavily reliant on information provided by the Association and its representatives. The starting reserve fund balance (current or projected) and member contribution totals are supplied by these sources. This information has not been audited nor have the financial projections or recommendations.





## FINANCIAL ANALYSIS

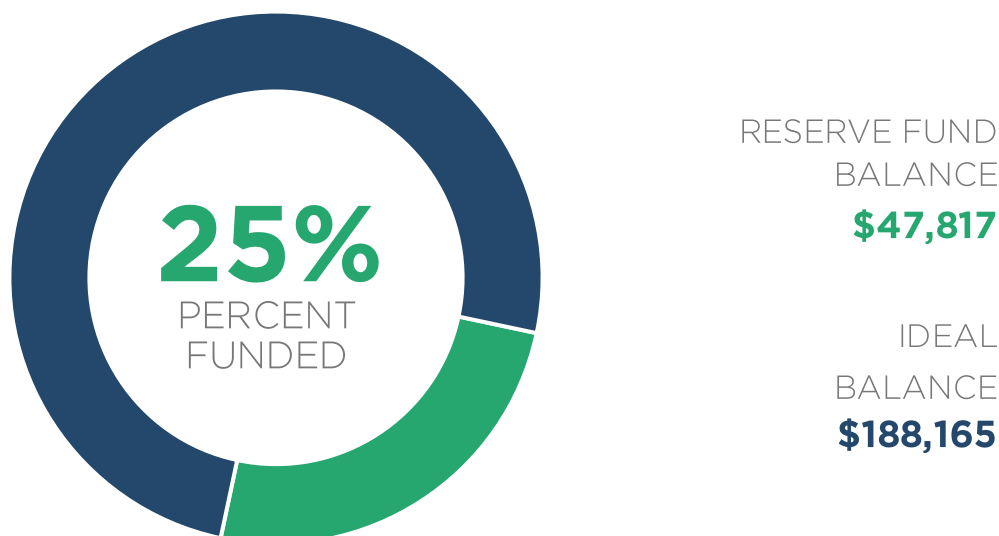
---

This section of the report is intended to provide the association with the awareness to adequately plan for the ongoing major maintenance, repair and replacement of their common property components. The recommendations included within this report represent one scenario, and are not intended to represent the only means of achieving the association's goals. We recommend that the Board of Directors use the following information as a guide in planning for their future objectives.

---

### Percent Funded

The Percent Funded equation is the industry measure of how well prepared an association is to meet its current and future repair and replacement obligations. Percent funded highlights the strength of the association's reserve account in relation to its anticipated costs of repair and replacement. The higher the funded level, the less exposed an association is to market conditions, unanticipated expenses or events, and fluctuations in the general economy.



An Association at or below a funding level of 30% has an increased risk of requiring special assessments to meet their ongoing obligations, as compared to Associations with higher funding levels. A level of funding at and above 60% is categorized as good or well funded. We recommend that associations look to achieve and maintain funding levels at and above 60%, with a preference to being 100% funded.



## **Funding Goals**

There is a range of funding alternatives available to the association. In our opinion the strategy chosen should not only meet the immediate needs and risk tolerance of current members, but also the longer term needs of the association.

The association needs to establish a reserve contribution rate which, at a minimum, meets their anticipated financial needs without having to resort to special assessment or deferred maintenance. In addition, the funding goal needs to be prudent enough to meet the expectations of current members while not unfairly burdening future owners.

The minimum funding goal needed to meet planned expenditure is Baseline Funding. Baseline Funding maintains the reserve account at or above zero dollars, but leaves the association with no contingency to address unanticipated outcomes. Threshold funding is a strategy designed to provide for this contingency by keeping cash reserves above a specific dollar amount or percent funded level.

---

### **FULL FUNDING**

Establishes a goal of achieving one hundred percent fully funded reserves by the end of the projection period.

### **THRESHOLD FUNDING**

Sets out to keep the cash reserves above a specified dollar or percent funded amount for the duration of the projection period.

### **BASELINE FUNDING**

Establishes a goal of maintaining a reserve account balance above zero dollars throughout the study period.

---

The reserve fund plan highlighted in this report is based upon the Full Funding program of reserve contributions. The Full Funding plan highlights an ideal level of contributions which will enable an association to be 100% funded by the end of the projection period. As stated previously, we recommend that the association implement a program that moves them toward and maintains a funding level of 60-100%.



## RESERVE COMPONENT LIST

Component	Useful Life	Remaining Useful Life	Quantity	Unit of Measure	Unit Cost	Current Cost	Current Fully Funded Balance
Pool House - Bldg Exterior, Roof	25	15	12	Squares	\$625.00	\$7,500	\$3,000
Pool House - Bldg Exterior, Gutters & Downspouts	25	15	70	LF	\$7.25	\$508	\$203
Pool House - Bldg Exterior, Caulk & Paint	10	7	1	Lump Sum	\$3,750.00	\$3,750	\$1,125
Pool House - Bldg Exterior, Siding	40	17	1,365	SF	\$16.00	\$21,840	\$12,558
Pool House - Bldg Exterior, Windows & Doors	10	7	1	Allowance	\$2,050.00	\$2,050	\$615
Pool House - Bldg Interior, Remodel	20	17	1	Lump Sum	\$22,700.00	\$22,700	\$3,405
Pool House - Electrical, Security System	15	12	1	Lump Sum	\$2,050.00	\$2,050	\$410
Pool House - Plumbing, Water Heater	15	9	1	Each	\$1,475.00	\$1,475	\$590
Pool - Repair & Resurface	15	4	1	Lump Sum	\$28,200.00	\$28,200	\$20,680
Pool - Coping, Replace	30	4	180	LF	\$105.00	\$18,900	\$16,380
Pool - Equipment, Pump & Filters	5	0	1	Allowance	\$5,150.00	\$5,150	\$5,150
Pool - Equipment, Heaters	15	6	1	Lump Sum	\$6,250.00	\$6,250	\$3,750
General Site - Concrete Sidewalk [5% Limited Repair]	10	4	7,050	SF	\$10.25	\$3,613	\$2,168
General Site - Landscape, Tree Felling & Removal	2	0	1	Allowance	\$8,225.00	\$8,225	\$8,225
General Site - Landscape, Tree & Shrub Replacement	2	0	1	Allowance	\$3,600.00	\$3,600	\$3,600
General Site - Landscape, Irrigation System	3	1	1	Allowance	\$5,675.00	\$5,675	\$3,783
General Site - Signage, Miscellaneous	5	2	1	Allowance	\$1,025.00	\$1,025	\$615
General Site - Bridge @ Lake Debra Jane, Replace	50	27	1	Lump Sum	\$54,000.00	\$54,000	\$24,840
General Site - Fence, Chain Link 10'	30	9	370	LF	\$42.00	\$15,540	\$10,878
General Site - Fence, Chain Link 6'	30	9	1,030	LF	\$26.00	\$26,780	\$18,746
General Site - Fence, Chain Link 4'	30	19	1,290	LF	\$22.50	\$29,025	\$10,643
General Site - Fence, Wood Split Rail	20	9	50	LF	\$16.00	\$800	\$440
General Site - Playground, Equipment @ Upper Park	20	10	1	Lump Sum	\$41,200.00	\$41,200	\$20,600
General Site - Playground, Equipment @ Lower Park	20	17	1	Lump Sum	\$16,500.00	\$16,500	\$2,475
General Site - Playground, Surface Material	4	0	1	Lump Sum	\$2,825.00	\$2,825	\$2,825
General Site - Equipment, Tennis Court	10	8	1	Lump Sum	\$1,550.00	\$1,550	\$310
General Site - Equipment, B'ball Court	20	4	1	Lump Sum	\$1,475.00	\$1,475	\$1,180
General Site - B'ball Court, Surface Color Coat & Repair	8	5	1	Lump Sum	\$5,300.00	\$5,300	\$1,988
General Site - Tennis Court, Surface Color Coat & Repair	8	5	1	Lump Sum	\$10,800.00	\$10,800	\$4,050
General Site - Equipment, Picnic Tables	3	2	1	Allowance	\$2,050.00	\$2,050	\$683
General Site - Park Shelters, Maintenance & Repair	10	7	1	Allowance	\$3,100.00	\$3,100	\$930
General Site - Dog Park	20	18	1	Lump Sum	\$13,200.00	\$13,200	\$1,320
<b>TOTALS</b>						<b>\$366,656</b>	<b>\$188,165</b>

- Readers should be aware that certain property elements are considered 'long life' elements and are not accounted for within the reserve study in conjunction with elements that are or can be managed as part of the Association's operating budget.

Cost estimates do not account for permits, architectural, or project management fees that may be required. Allowances and contingencies must also be added to the total as the scope of work is defined.





## RESERVE EXPENSES 1-10 YEARS

Component	2021	2022	2023	2024	2025	2026	2027	2028	2029	2030
Pool House - Bldg Exterior, Roof	\$0	\$0	\$0	\$0	\$0	\$0	\$0	\$0	\$0	\$0
Pool House - Bldg Exterior, Gutters & Downspouts	\$0	\$0	\$0	\$0	\$0	\$0	\$0	\$0	\$0	\$0
Pool House - Bldg Exterior, Caulk & Paint	\$0	\$0	\$0	\$0	\$0	\$0	\$0	\$4,612	\$0	\$0
Pool House - Bldg Exterior, Siding	\$0	\$0	\$0	\$0	\$0	\$0	\$0	\$0	\$0	\$0
Pool House - Bldg Exterior, Windows & Doors	\$0	\$0	\$0	\$0	\$0	\$0	\$0	\$2,521	\$0	\$0
Pool House - Bldg Interior, Remodel	\$0	\$0	\$0	\$0	\$0	\$0	\$0	\$0	\$0	\$0
Pool House - Electrical, Security System	\$0	\$0	\$0	\$0	\$0	\$0	\$0	\$0	\$0	\$0
Pool House - Plumbing, Water Heater	\$0	\$0	\$0	\$0	\$0	\$0	\$0	\$0	\$0	\$1,925
Pool - Repair & Resurface	\$0	\$0	\$0	\$0	\$31,739	\$0	\$0	\$0	\$0	\$0
Pool - Coping, Replace	\$0	\$0	\$0	\$0	\$21,272	\$0	\$0	\$0	\$0	\$0
Pool - Equipment, Pump & Filters	\$5,150	\$0	\$0	\$0	\$0	\$5,970	\$0	\$0	\$0	\$0
Pool - Equipment, Heaters	\$0	\$0	\$0	\$0	\$0	\$0	\$7,463	\$0	\$0	\$0
General Site - Concrete Sidewalk [5% Limited Repair]	\$0	\$0	\$0	\$0	\$4,067	\$0	\$0	\$0	\$0	\$0
General Site - Landscape, Tree Felling & Removal	\$8,225	\$0	\$8,726	\$0	\$9,257	\$0	\$9,821	\$0	\$10,419	\$0
General Site - Landscape, Tree & Shrub Replacement	\$3,600	\$0	\$3,819	\$0	\$4,052	\$0	\$4,299	\$0	\$4,560	\$0
General Site - Landscape, Irrigation System	\$0	\$5,845	\$0	\$0	\$6,387	\$0	\$0	\$6,980	\$0	\$0
General Site - Signage, Miscellaneous	\$0	\$0	\$1,087	\$0	\$0	\$0	\$0	\$1,261	\$0	\$0
General Site - Bridge @ Lake Debra Jane, Replace	\$0	\$0	\$0	\$0	\$0	\$0	\$0	\$0	\$0	\$0
General Site - Fence, Chain Link 10'	\$0	\$0	\$0	\$0	\$0	\$0	\$0	\$0	\$0	\$20,276
General Site - Fence, Chain Link 6'	\$0	\$0	\$0	\$0	\$0	\$0	\$0	\$0	\$0	\$34,942
General Site - Fence, Chain Link 4'	\$0	\$0	\$0	\$0	\$0	\$0	\$0	\$0	\$0	\$0
General Site - Fence, Wood Split Rail	\$0	\$0	\$0	\$0	\$0	\$0	\$0	\$0	\$0	\$1,044
General Site - Playground, Equipment @ Upper Park	\$0	\$0	\$0	\$0	\$0	\$0	\$0	\$0	\$0	\$0
General Site - Playground, Equipment @ Lower Park	\$0	\$0	\$0	\$0	\$0	\$0	\$0	\$0	\$0	\$0
General Site - Playground, Surface Material	\$2,825	\$0	\$0	\$0	\$3,180	\$0	\$0	\$0	\$3,579	\$0
General Site - Equipment, Tennis Court	\$0	\$0	\$0	\$0	\$0	\$0	\$0	\$0	\$1,963	\$0
General Site - Equipment, B'ball Court	\$0	\$0	\$0	\$0	\$1,660	\$0	\$0	\$0	\$0	\$0
General Site - B'ball Court, Surface Color Coat & Repair	\$0	\$0	\$0	\$0	\$0	\$6,144	\$0	\$0	\$0	\$0
General Site - Tennis Court, Surface Color Coat & Repair	\$0	\$0	\$0	\$0	\$0	\$12,520	\$0	\$0	\$0	\$0
General Site - Equipment, Picnic Tables	\$0	\$0	\$2,175	\$0	\$0	\$2,377	\$0	\$0	\$2,597	\$0
General Site - Park Shelters, Maintenance & Repair	\$0	\$0	\$0	\$0	\$0	\$0	\$0	\$3,813	\$0	\$0
General Site - Dog Park	\$0	\$0	\$0	\$0	\$0	\$0	\$0	\$0	\$0	\$0
Annual Expenditure	\$19,800	\$5,845	\$15,807	\$0	\$81,614	\$27,011	\$21,582	\$19,186	\$23,119	\$58,186

YEARS 1 THROUGH 10



## RESERVE EXPENSES 11-20 YEARS

Component	2031	2032	2033	2034	2035	2036	2037	2038	2039	2040
Pool House - Bldg Exterior, Roof	\$0	\$0	\$0	\$0	\$0	\$11,685	\$0	\$0	\$0	\$0
Pool House - Bldg Exterior, Gutters & Downspouts	\$0	\$0	\$0	\$0	\$0	\$791	\$0	\$0	\$0	\$0
Pool House - Bldg Exterior, Caulk & Paint	\$0	\$0	\$0	\$0	\$0	\$0	\$0	\$6,198	\$0	\$0
Pool House - Bldg Exterior, Siding	\$0	\$0	\$0	\$0	\$0	\$0	\$0	\$36,098	\$0	\$0
Pool House - Bldg Exterior, Windows & Doors	\$0	\$0	\$0	\$0	\$0	\$0	\$0	\$3,388	\$0	\$0
Pool House - Bldg Interior, Remodel	\$0	\$0	\$0	\$0	\$0	\$0	\$0	\$37,520	\$0	\$0
Pool House - Electrical, Security System	\$0	\$0	\$2,923	\$0	\$0	\$0	\$0	\$0	\$0	\$0
Pool House - Plumbing, Water Heater	\$0	\$0	\$0	\$0	\$0	\$0	\$0	\$0	\$0	\$0
Pool - Repair & Resurface	\$0	\$0	\$0	\$0	\$0	\$0	\$0	\$0	\$0	\$49,449
Pool - Coping, Replace	\$0	\$0	\$0	\$0	\$0	\$0	\$0	\$0	\$0	\$0
Pool - Equipment, Pump & Filters	\$6,921	\$0	\$0	\$0	\$0	\$8,024	\$0	\$0	\$0	\$0
Pool - Equipment, Heaters	\$0	\$0	\$0	\$0	\$0	\$0	\$0	\$0	\$0	\$0
General Site - Concrete Sidewalk [5% Limited Repair]	\$0	\$0	\$0	\$0	\$5,465	\$0	\$0	\$0	\$0	\$0
General Site - Landscape, Tree Felling & Removal	\$11,054	\$0	\$11,727	\$0	\$12,441	\$0	\$13,199	\$0	\$14,003	\$0
General Site - Landscape, Tree & Shrub Replacement	\$4,838	\$0	\$5,133	\$0	\$5,445	\$0	\$5,777	\$0	\$6,129	\$0
General Site - Landscape, Irrigation System	\$7,627	\$0	\$0	\$8,334	\$0	\$0	\$9,107	\$0	\$0	\$9,951
General Site - Signage, Miscellaneous	\$0	\$0	\$1,461	\$0	\$0	\$0	\$0	\$1,694	\$0	\$0
General Site - Bridge @ Lake Debra Jane, Replace	\$0	\$0	\$0	\$0	\$0	\$0	\$0	\$0	\$0	\$0
General Site - Fence, Chain Link 10'	\$0	\$0	\$0	\$0	\$0	\$0	\$0	\$0	\$0	\$0
General Site - Fence, Chain Link 6'	\$0	\$0	\$0	\$0	\$0	\$0	\$0	\$0	\$0	\$0
General Site - Fence, Chain Link 4'	\$0	\$0	\$0	\$0	\$0	\$0	\$0	\$0	\$0	\$50,896
General Site - Fence, Wood Split Rail	\$0	\$0	\$0	\$0	\$0	\$0	\$0	\$0	\$0	\$0
General Site - Playground, Equipment @ Upper Park	\$55,369	\$0	\$0	\$0	\$0	\$0	\$0	\$0	\$0	\$0
General Site - Playground, Equipment @ Lower Park	\$0	\$0	\$0	\$0	\$0	\$0	\$0	\$27,272	\$0	\$0
General Site - Playground, Surface Material	\$0	\$0	\$4,028	\$0	\$0	\$0	\$4,533	\$0	\$0	\$0
General Site - Equipment, Tennis Court	\$0	\$0	\$0	\$0	\$0	\$0	\$0	\$0	\$2,639	\$0
General Site - Equipment, B'ball Court	\$0	\$0	\$0	\$0	\$0	\$0	\$0	\$0	\$0	\$0
General Site - B'ball Court, Surface Color Coat & Repair	\$0	\$0	\$0	\$7,783	\$0	\$0	\$0	\$0	\$0	\$0
General Site - Tennis Court, Surface Color Coat & Repair	\$0	\$0	\$0	\$15,860	\$0	\$0	\$0	\$0	\$0	\$0
General Site - Equipment, Picnic Tables	\$0	\$2,838	\$0	\$0	\$3,101	\$0	\$0	\$3,388	\$0	\$0
General Site - Park Shelters, Maintenance & Repair	\$0	\$0	\$0	\$0	\$0	\$0	\$0	\$5,124	\$0	\$0
General Site - Dog Park	\$0	\$0	\$0	\$0	\$0	\$0	\$0	\$0	\$22,472	\$0
Annual Expenditure	\$85,809	\$2,838	\$25,272	\$31,977	\$26,452	\$20,499	\$32,616	\$120,683	\$45,242	\$110,296

YEARS 11 THROUGH 20



## RESERVE EXPENSES 21-30 YEARS

Component	2041	2042	2043	2044	2045	2046	2047	2048	2049	2050
Pool House - Bldg Exterior, Roof	\$0	\$0	\$0	\$0	\$0	\$0	\$0	\$0	\$0	\$0
Pool House - Bldg Exterior, Gutters & Downspouts	\$0	\$0	\$0	\$0	\$0	\$0	\$0	\$0	\$0	\$0
Pool House - Bldg Exterior, Caulk & Paint	\$0	\$0	\$0	\$0	\$0	\$0	\$0	\$8,330	\$0	\$0
Pool House - Bldg Exterior, Siding	\$0	\$0	\$0	\$0	\$0	\$0	\$0	\$0	\$0	\$0
Pool House - Bldg Exterior, Windows & Doors	\$0	\$0	\$0	\$0	\$0	\$0	\$0	\$4,554	\$0	\$0
Pool House - Bldg Interior, Remodel	\$0	\$0	\$0	\$0	\$0	\$0	\$0	\$0	\$0	\$0
Pool House - Electrical, Security System	\$0	\$0	\$0	\$0	\$0	\$0	\$0	\$4,554	\$0	\$0
Pool House - Plumbing, Water Heater	\$0	\$0	\$0	\$0	\$2,998	\$0	\$0	\$0	\$0	\$0
Pool - Repair & Resurface	\$0	\$0	\$0	\$0	\$0	\$0	\$0	\$0	\$0	\$0
Pool - Coping, Replace	\$0	\$0	\$0	\$0	\$0	\$0	\$0	\$0	\$0	\$0
Pool - Equipment, Pump & Filters	\$9,301	\$0	\$0	\$0	\$0	\$10,783	\$0	\$0	\$0	\$0
Pool - Equipment, Heaters	\$0	\$11,627	\$0	\$0	\$0	\$0	\$0	\$0	\$0	\$0
General Site - Concrete Sidewalk [5% Limited Repair]	\$0	\$0	\$0	\$0	\$7,345	\$0	\$0	\$0	\$0	\$0
General Site - Landscape, Tree Felling & Removal	\$14,855	\$0	\$15,760	\$0	\$16,720	\$0	\$17,738	\$0	\$18,818	\$0
General Site - Landscape, Tree & Shrub Replacement	\$6,502	\$0	\$6,898	\$0	\$7,318	\$0	\$7,764	\$0	\$8,237	\$0
General Site - Landscape, Irrigation System	\$0	\$0	\$10,874	\$0	\$0	\$11,882	\$0	\$0	\$12,984	\$0
General Site - Signage, Miscellaneous	\$0	\$0	\$1,964	\$0	\$0	\$0	\$0	\$2,277	\$0	\$0
General Site - Bridge @ Lake Debra Jane, Replace	\$0	\$0	\$0	\$0	\$0	\$0	\$0	\$119,950	\$0	\$0
General Site - Fence, Chain Link 10'	\$0	\$0	\$0	\$0	\$0	\$0	\$0	\$0	\$0	\$0
General Site - Fence, Chain Link 6'	\$0	\$0	\$0	\$0	\$0	\$0	\$0	\$0	\$0	\$0
General Site - Fence, Chain Link 4'	\$0	\$0	\$0	\$0	\$0	\$0	\$0	\$0	\$0	\$0
General Site - Fence, Wood Split Rail	\$0	\$0	\$0	\$0	\$0	\$0	\$0	\$0	\$0	\$1,885
General Site - Playground, Equipment @ Upper Park	\$0	\$0	\$0	\$0	\$0	\$0	\$0	\$0	\$0	\$0
General Site - Playground, Equipment @ Lower Park	\$0	\$0	\$0	\$0	\$0	\$0	\$0	\$0	\$0	\$0
General Site - Playground, Surface Material	\$5,102	\$0	\$0	\$0	\$5,743	\$0	\$0	\$0	\$6,463	\$0
General Site - Equipment, Tennis Court	\$0	\$0	\$0	\$0	\$0	\$0	\$0	\$0	\$3,546	\$0
General Site - Equipment, B'ball Court	\$0	\$0	\$0	\$0	\$2,998	\$0	\$0	\$0	\$0	\$0
General Site - B'ball Court, Surface Color Coat & Repair	\$0	\$9,860	\$0	\$0	\$0	\$0	\$0	\$0	\$0	\$12,490
General Site - Tennis Court, Surface Color Coat & Repair	\$0	\$20,091	\$0	\$0	\$0	\$0	\$0	\$0	\$0	\$25,451
General Site - Equipment, Picnic Tables	\$3,703	\$0	\$0	\$4,046	\$0	\$0	\$4,421	\$0	\$0	\$4,831
General Site - Park Shelters, Maintenance & Repair	\$0	\$0	\$0	\$0	\$0	\$0	\$0	\$6,886	\$0	\$0
General Site - Dog Park	\$0	\$0	\$0	\$0	\$0	\$0	\$0	\$0	\$0	\$0
Annual Expenditure	\$39,464	\$41,578	\$35,496	\$4,046	\$43,122	\$22,665	\$29,923	\$146,550	\$50,048	\$44,657

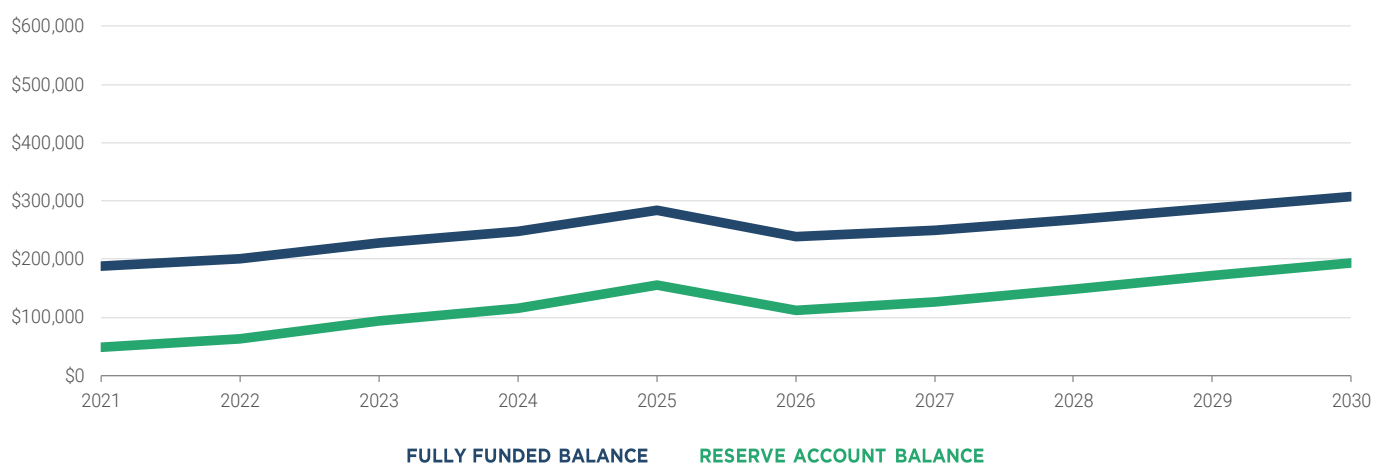
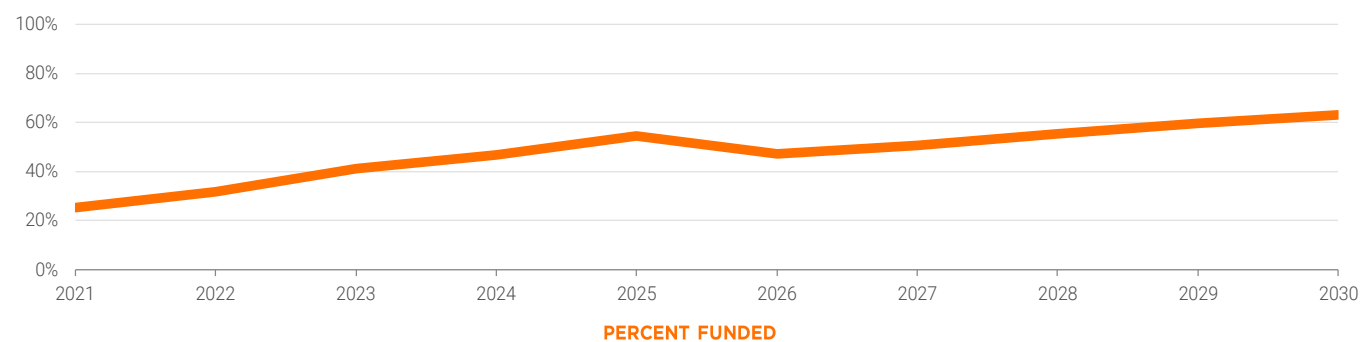
YEARS 21 THROUGH 30





## FULL FUNDING PLAN 1-10 YEARS

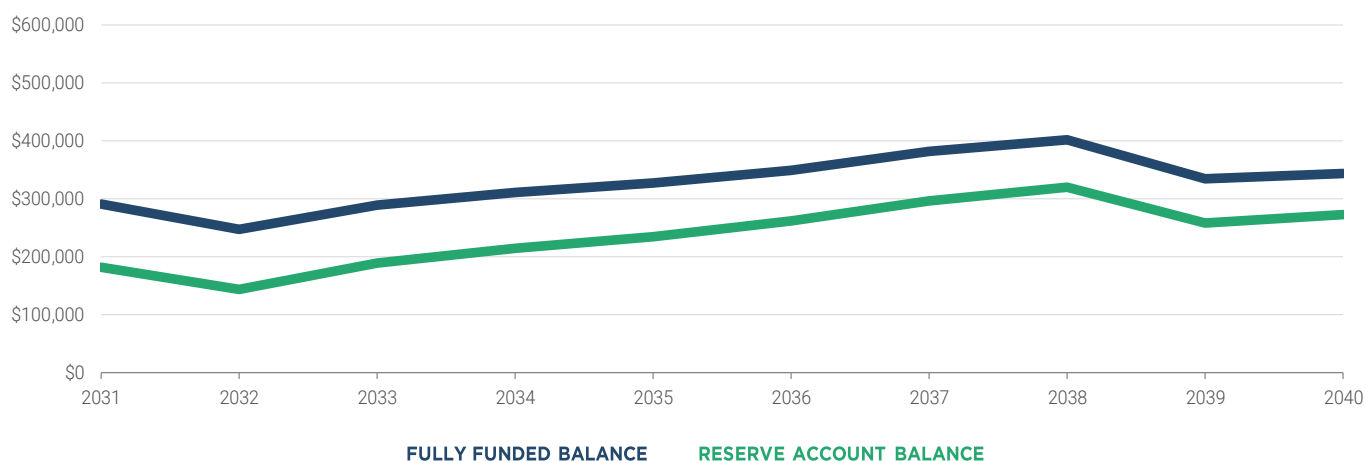
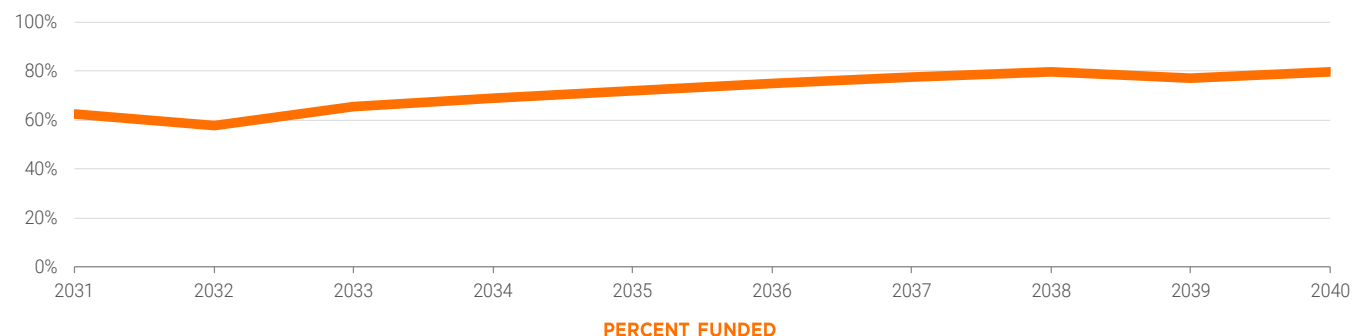
YEAR 1 - 10	2021	2022	2023	2024	2025	2026	2027	2028	2029	2030
Fully Funded Balance	\$188,165	\$200,327	\$228,035	\$247,144	\$283,965	\$238,710	\$249,248	\$266,629	\$287,963	\$306,881
Percentage Funded (%)	25%	32%	41%	47%	54%	47%	51%	55%	60%	63%
Beginning Balance	\$47,817	\$63,395	\$93,992	\$115,722	\$154,388	\$112,599	\$126,607	\$147,275	\$171,609	\$193,318
Reserve Contribution	\$35,373	\$36,434	\$37,527	\$38,653	\$39,812	\$41,007	\$42,237	\$43,504	\$44,809	\$46,153
Avg Unit Contribution (mth)	\$6.64	\$6.84	\$7.04	\$7.25	\$7.47	\$7.70	\$7.93	\$8.17	\$8.41	\$8.66
Contribution Increase (%)		3.00%	3.00%	3.00%	3.00%	3.00%	3.00%	3.00%	3.00%	3.00%
Special Assessment										
Interest Earned	\$6	\$8	\$10	\$14	\$13	\$12	\$14	\$16	\$18	\$19
Reserve Expenditures	\$19,800	\$5,845	\$15,807	\$0	\$81,614	\$27,011	\$21,582	\$19,186	\$23,119	\$58,186
ENDING BALANCE	\$63,395	\$93,992	\$115,722	\$154,388	\$112,599	\$126,607	\$147,275	\$171,609	\$193,318	\$181,303





## FULL FUNDING PLAN 11-20 YEARS

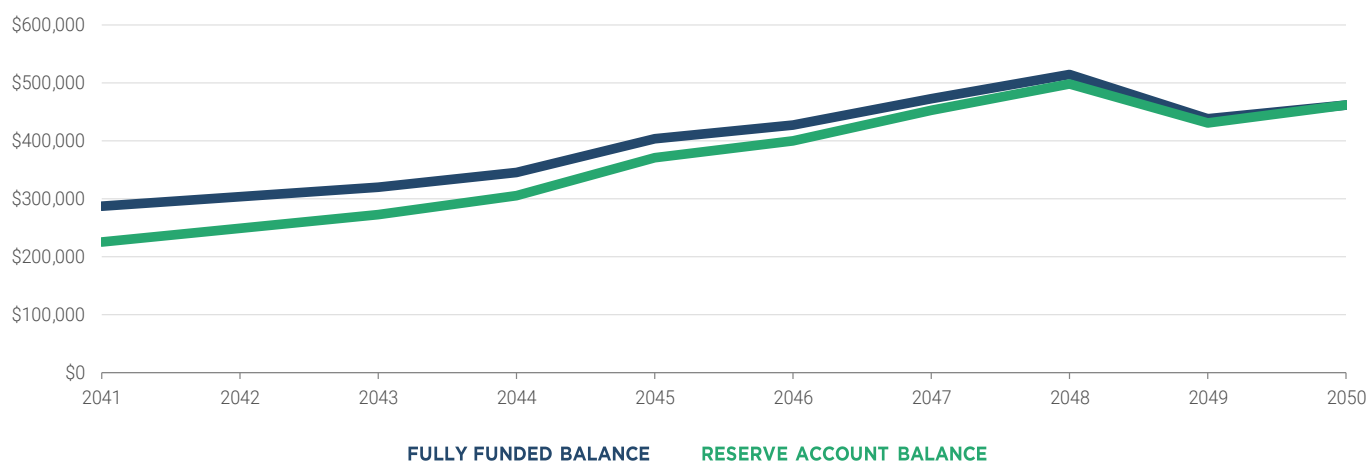
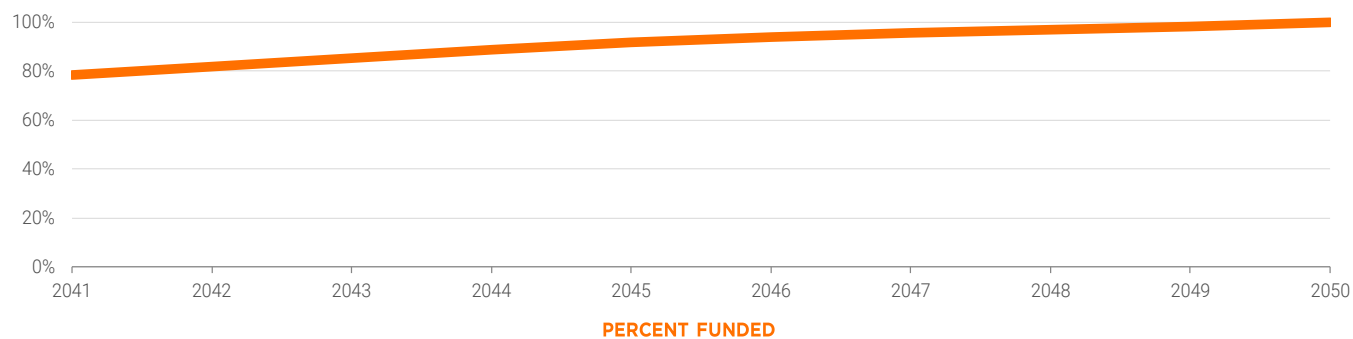
YEAR 11 - 20	2031	2032	2033	2034	2035	2036	2037	2038	2039	2040
Fully Funded Balance	\$291,268	\$247,789	\$289,552	\$310,578	\$326,478	\$349,732	\$381,037	\$402,059	\$334,298	\$343,542
Percentage Funded (%)	62%	58%	65%	69%	72%	75%	78%	80%	77%	79%
Beginning Balance	\$181,303	\$143,048	\$189,191	\$214,373	\$234,364	\$261,441	\$296,079	\$320,257	\$258,069	\$273,073
Reserve Contribution	\$47,538	\$48,964	\$50,433	\$51,946	\$53,504	\$55,110	\$56,763	\$58,466	\$60,220	\$62,026
Avg Unit Contribution (mth)	\$8.92	\$9.19	\$9.47	\$9.75	\$10.04	\$10.34	\$10.65	\$10.97	\$11.30	\$11.64
Contribution Increase (%)	3.00%	3.00%	3.00%	3.00%	3.00%	3.00%	3.00%	3.00%	3.00%	3.00%
Special Assessment										
Interest Earned	\$16	\$17	\$20	\$22	\$25	\$28	\$31	\$29	\$27	\$25
Reserve Expenditures	\$85,809	\$2,838	\$25,272	\$31,977	\$26,452	\$20,499	\$32,616	\$120,683	\$45,242	\$110,296
ENDING BALANCE	\$143,048	\$189,191	\$214,373	\$234,364	\$261,441	\$296,079	\$320,257	\$258,069	\$273,073	\$224,829





## FULL FUNDING PLAN 21-30 YEARS

YEAR 21 - 30	2041	2042	2043	2044	2045	2046	2047	2048	2049	2050
Fully Funded Balance	\$287,433	\$304,013	\$320,372	\$344,987	\$404,281	\$426,699	\$472,501	\$513,892	\$438,141	\$461,306
Percentage Funded (%)	78%	82%	85%	89%	92%	94%	96%	97%	98%	100%
Beginning Balance	\$224,829	\$249,276	\$273,528	\$305,839	\$371,638	\$400,460	\$451,901	\$498,310	\$430,380	\$461,306
Reserve Contribution	\$63,887	\$65,804	\$67,778	\$69,811	\$71,905	\$74,063	\$76,284	\$78,573	\$80,930	\$83,358
Avg Unit Contribution (mth)	\$11.99	\$12.35	\$12.72	\$13.10	\$13.50	\$13.90	\$14.32	\$14.75	\$15.19	\$15.65
Contribution Increase (%)	3.00%	3.00%	3.00%	3.00%	3.00%	3.00%	3.00%	3.00%	3.00%	3.00%
Special Assessment										
Interest Earned	\$24	\$26	\$29	\$34	\$39	\$43	\$48	\$46	\$45	\$48
Reserve Expenditures	\$39,464	\$41,578	\$35,496	\$4,046	\$43,122	\$22,665	\$29,923	\$146,550	\$50,048	\$44,657
ENDING BALANCE	\$249,276	\$273,528	\$305,839	\$371,638	\$400,460	\$451,901	\$498,310	\$430,380	\$461,306	\$500,055





## DISCLOSURES

As a guideline for establishing and spending reserves, it is assumed that the reserve study will be regularly updated to address the Association's changing physical and financial circumstances. As such this report is valid at the date shown and Reserve Study Group, LLC (RSG) cannot be held responsible for subsequent changes in physical/chemical environmental conditions and/or legislation over which we have no control.

This reserve study is based on visual inspections of the physical plant's major components. No invasive or destructive testing, or testing of materials was conducted during the inspections, or at any other time during the preparation of this report. It is assumed that all building and ancillary components have been designed and constructed properly and that life cycles will approximate normal industry performance standards. RSG shall not be responsible for accurate determination of remaining life expectancies of components that may have been improperly designed and constructed. Our opinions of the remaining life expectancy of the property's components do not represent a guarantee or warranty of performance in relation to the product, materials or workmanship.

Cost estimates used represent a preliminary opinion only and are neither a quote nor a warranty of actual costs that may be incurred. These estimates are based on typical cost data that may not fully characterize the scope of the underlying property conditions. It should be anticipated that actual cost outcomes will be impacted by varying physical and economic conditions, maintenance practices, changes in technology, and future regulatory actions.

The authors of this report make no representation or warranty, expressed or implied, with respect to the contents of this publication or any part thereof and cannot accept any legal responsibility or liability for any inaccuracies, errors or omissions contained in this publication or any part thereof. Our best professional judgment has been used, however certain facts forming the basis of this report are subject to professional interpretation and differing conclusions could be reached.

RSG nor any of its representatives, agents or employees maintain management roles or vested interest in, or have other business relationships with the Association. There is no perceived or actual conflicts of interest between RSG and the Association.

This reserve study should be reviewed carefully. It may not include all common and limited common element components that will require major maintenance, repair, or replacement in future years, and may not include regular contributions to a reserve account for the cost of such maintenance, repair, or replacement. The failure to include a component in a reserve study, or to provide contributions to a reserve account for a component, may, under some circumstances, require you to pay on demand as a special assessment your share of common expenses for the cost of major maintenance, repair, or replacement of a reserve component.





## GLOSSARY OF TERMS

### Component

The individual line items in the Reserve Study which are included in the Physical Analysis. These elements form the building blocks for the Reserve Study.

### Estimated Useful Life

The estimated time, in years, that a reserve component can be expected to serve its intended function if properly constructed in its present application or installation.

### Fully Funded

When the actual (or projected) Reserve balance is equal to the Fully Funded Balance.

### Fully Funded Balance (FFB)

The Reserve balance that is in direct proportion to the fraction of life “used up” of the current Repair or Replacement cost. This number is calculated for each component, then summed together for an Association total.

$$\text{FFB} = \text{Current Cost} \times \text{Effective Age} / \text{Useful Life}$$

### Percent Funded

The ratio, at a particular point of time, of the actual Reserve Balance to the Fully Funded Balance (FFB), expressed as a percentage.

### Remaining Useful Life

The estimated time, in years, that a Reserve Component can be expected to continue to service its intended function. Projects anticipated to occur in the initial year have a “zero” Remaining Life.

### Unit Cost Estimate

The cost of replacing, repairing, or restoring a Reserve Component to its original functional condition. The Current Replacement Cost would be the cost to replace, repair, or restore the component during the current year.

### Unit of Measure

Various units of measure have been used to quantify the amounts and costs in relation to each reserve component. Below are the key units used as part of this report.

SF = Square Foot  
LF = Linear Foot

SY = Square Yard  
SQUARE = 100 Square Feet (Roofing)

